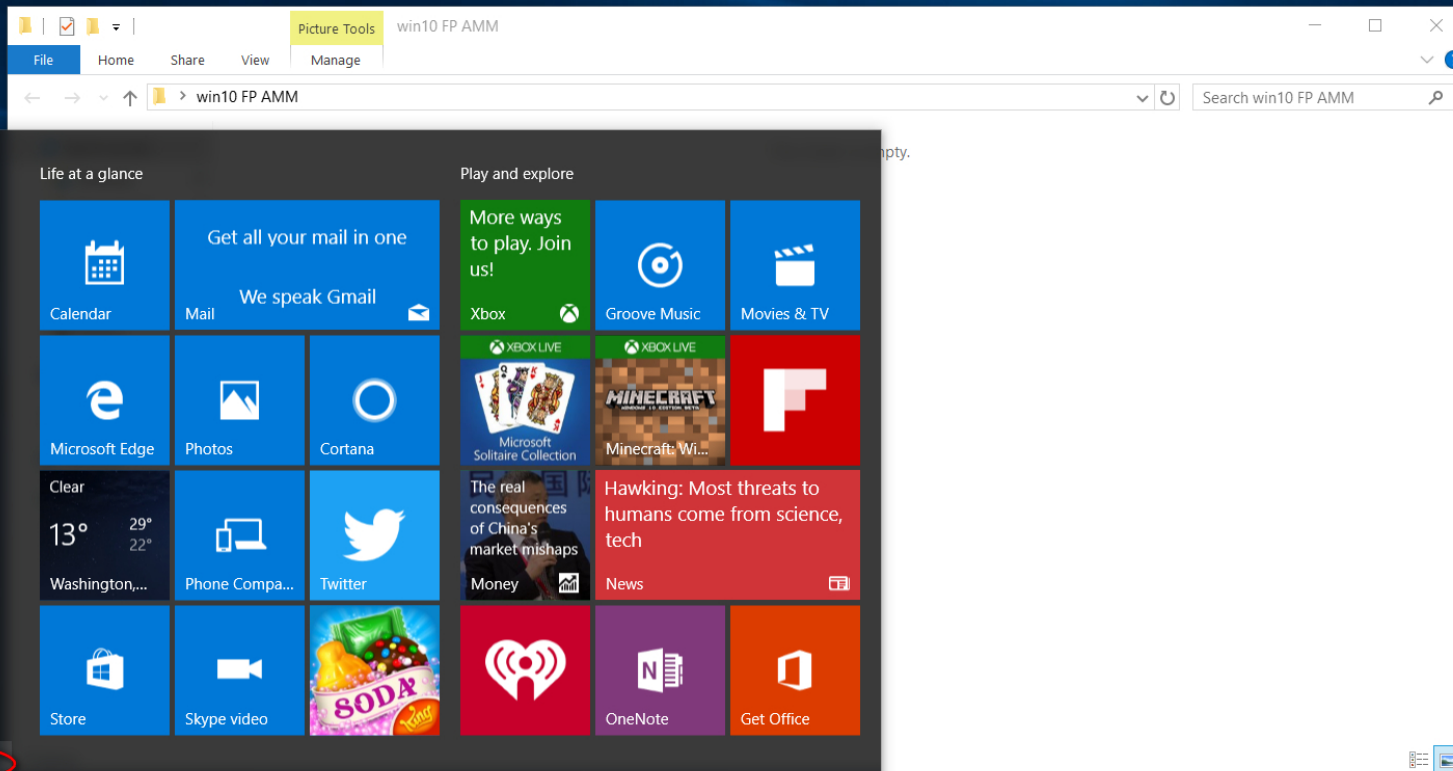
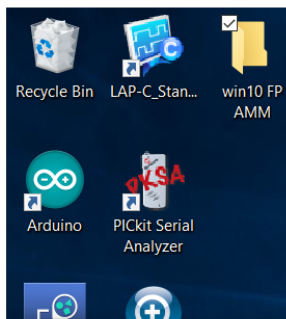


USB Fingerprint Dongle WBF driver install

ANGES



select setting



2:select devices



System
Display, notifications,
apps, power



Devices
Bluetooth, printers,
mouse



Network & Internet
Wi-Fi, airplane mode,
VPN



Personalization
Background, lock
screen, colors



Accounts
Your accounts, email,
sync, work, family



Time & language
Speech, region, date



Ease of Access
Narrator, magnifier,
high contrast



Privacy
Location, camera



Update & security
Windows Update,
recovery, backup



Settings

DEVICES

Printers & scanners

Connected devices


Bluetooth


Mouse & touchpad


Typing


AutoPlay

USB

 Foxit Reader PDF Printer
Last used

 Microsoft Print to PDF

 Microsoft XPS Document Writer

 傳送至 OneNote 2010

Let Windows manage my default printer

When turned on, the default printer is the last used printer.

On

Download over metered connections

To help prevent extra charges, keep this off so device software (drivers, info, and apps) for new devices won't download while you're on metered Internet connections.

Off

Related settings

[Devices and printers](#)


Device manager


3:select device manager

Find a setting

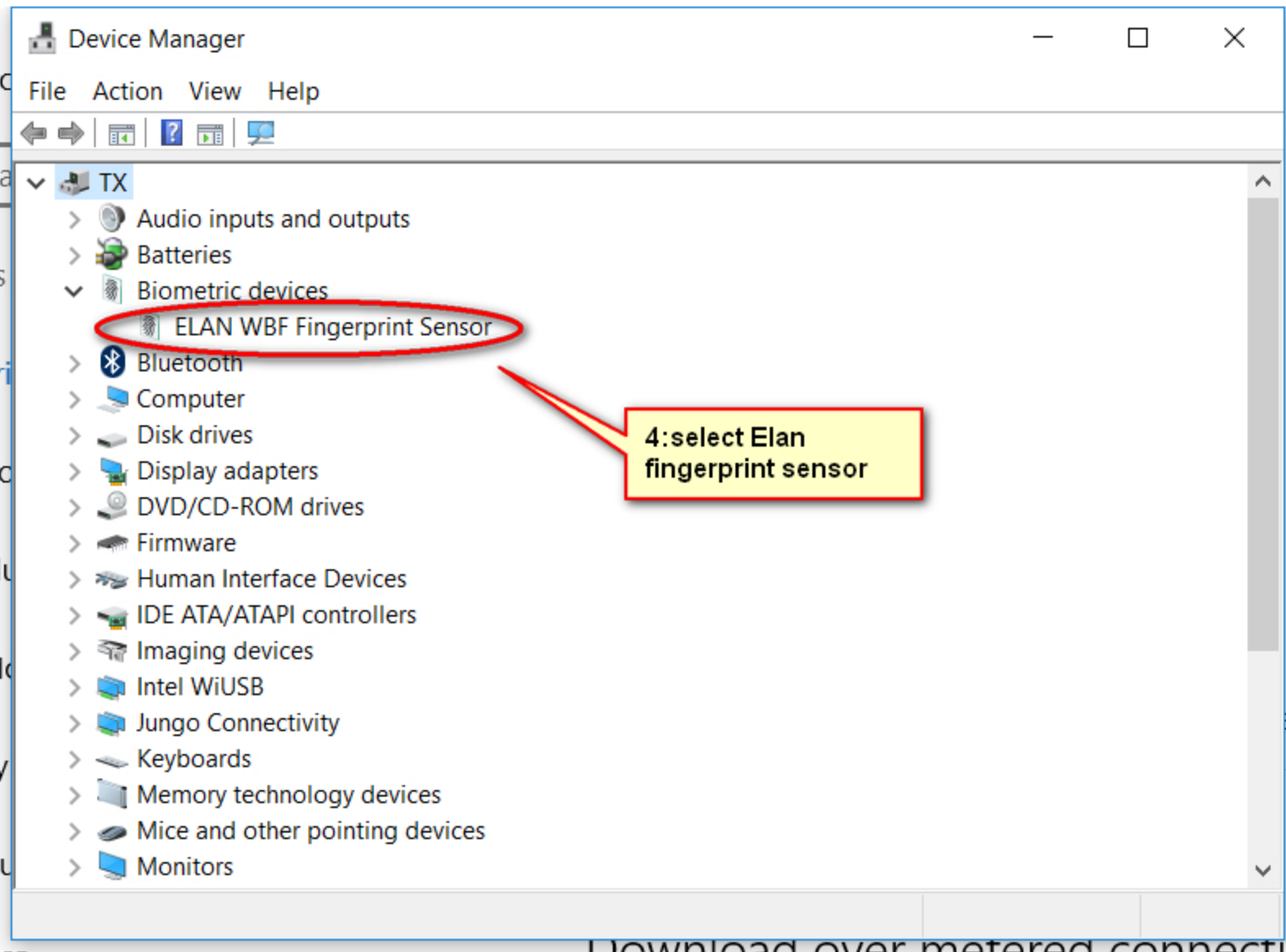
Windows logo

I'm Cortana. Ask me anything.





ENG 6:35 PM 1/19/2016



ELAN WBF Fingerprint Sensor Properties



General Driver Details Events Power Management



ELAN WBF Fingerprint Sensor

Driver Provider: ELAN Finger Print
Driver Date: 2016/11/23
Driver Version: 1.5.8.2102
Digital Signer: ELAN Microelectronics Corporation

Driver Details

To view details about the driver files.

Update Driver...

To update the driver software for this device.

Roll Back Driver...

If the device fails after updating the driver, roll back to the previously installed driver.

Disable

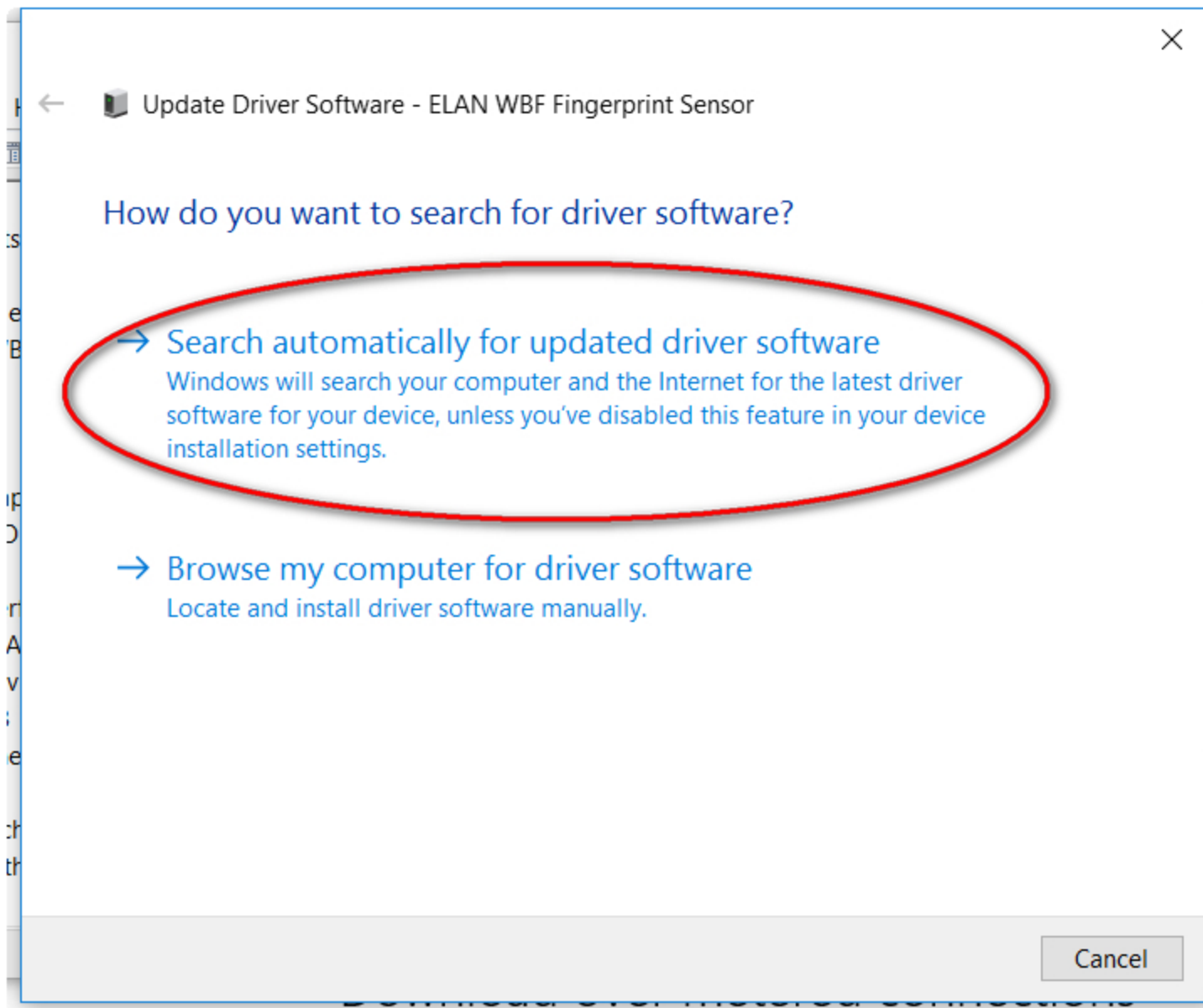
Disables the selected device.

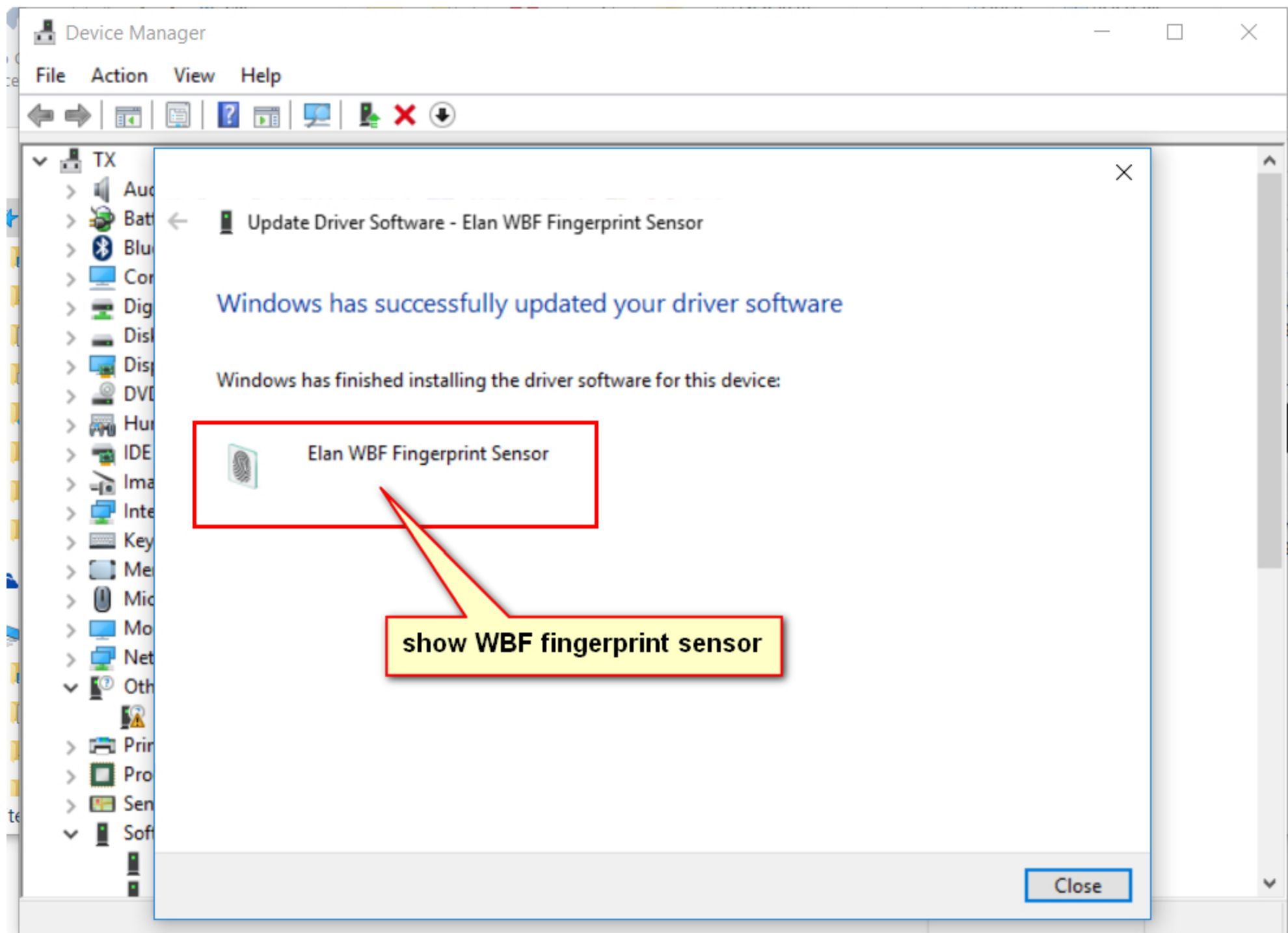
Uninstall

To uninstall the driver (Advanced).

OK

Cancel







SETTINGS

Find a setting



System

Display, notifications,
apps, power



Devices

Bluetooth, printers,
mouse



Network & Internet

Wi-Fi, airplane mode,
VPN



Personalization

Background, lock
screen, colors



Accounts

Your accounts, email,
sync, work, family



Time & language

Speech, region, date



Ease of Access

Narrator, magnifier,
high contrast



Privacy

Location, camera



Update & security

Windows Update,
recovery, backup

select accounts

Settings

ACCOUNTS

Find a setting

Your email and accounts

Sign-in options

Work access

Family & other users

Sync your settings

Require sign-in

If you've been away, when should Windows require you to sign in again?

When PC wakes up from sleep

Password

Change your account password

Change

PIN

You can use this PIN to sign in to Windows, apps, and services.

Change

Remove

[I forgot my PIN](#)

Windows Hello

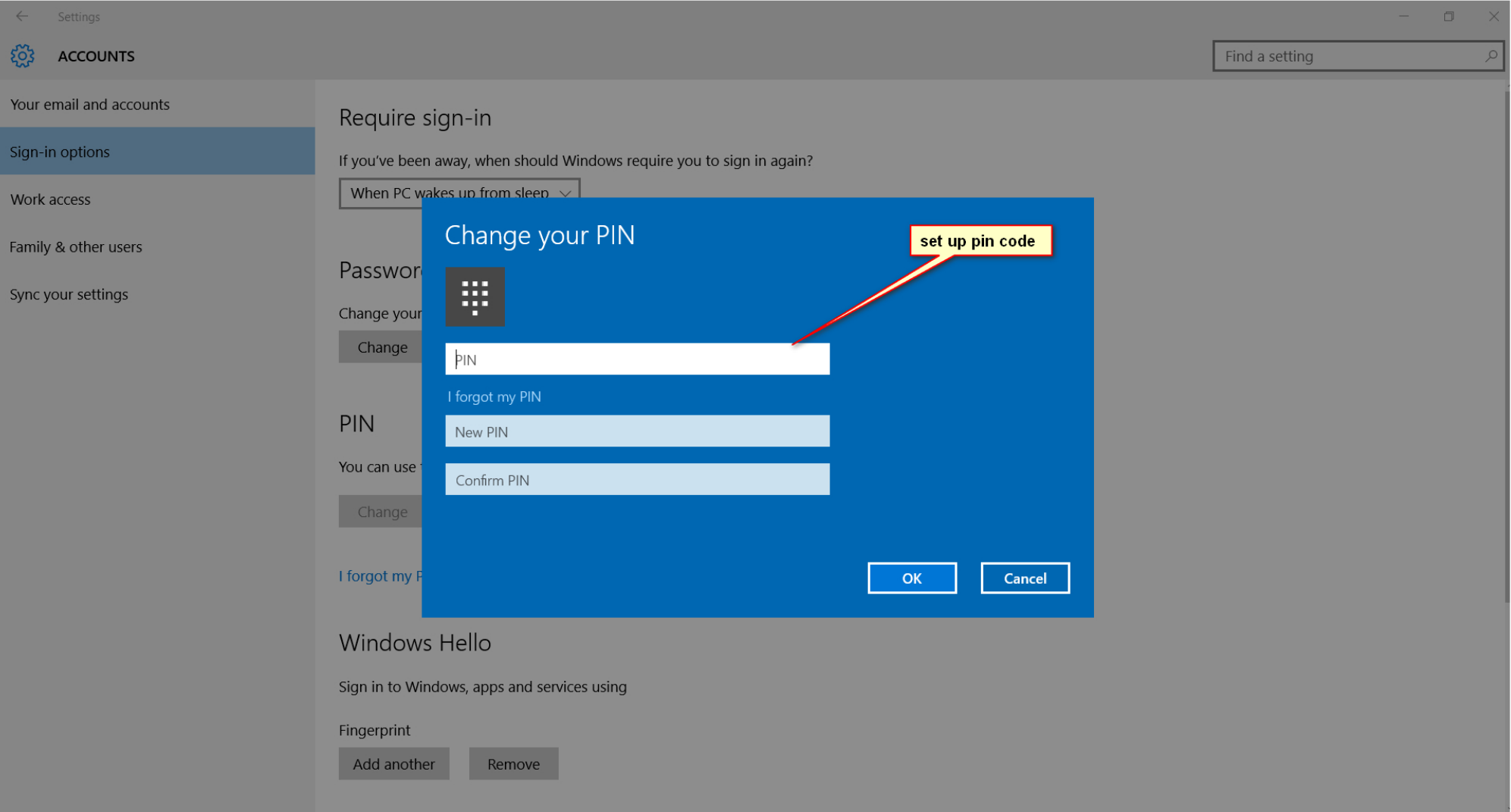
Sign in to Windows, apps and services using

Fingerprint

Add another

Remove

setting pin code



Settings

ACCOUNTS

Your email and accounts

Sign-in options

Work access

Family & other users

Sync your settings

Find a setting

Require sign-in

If you've been away, when should Windows require you to sign in again?

When PC wakes up from sleep

Password

Change your account password

Change

PIN

You can use this PIN to sign in to Windows, apps, and services.

Change

Remove

[I forgot my PIN](#)

Windows Hello

Sign in to Windows, apps and services using

Fingerprint

Set up

setup windows hello

Welcome to Windows Hello

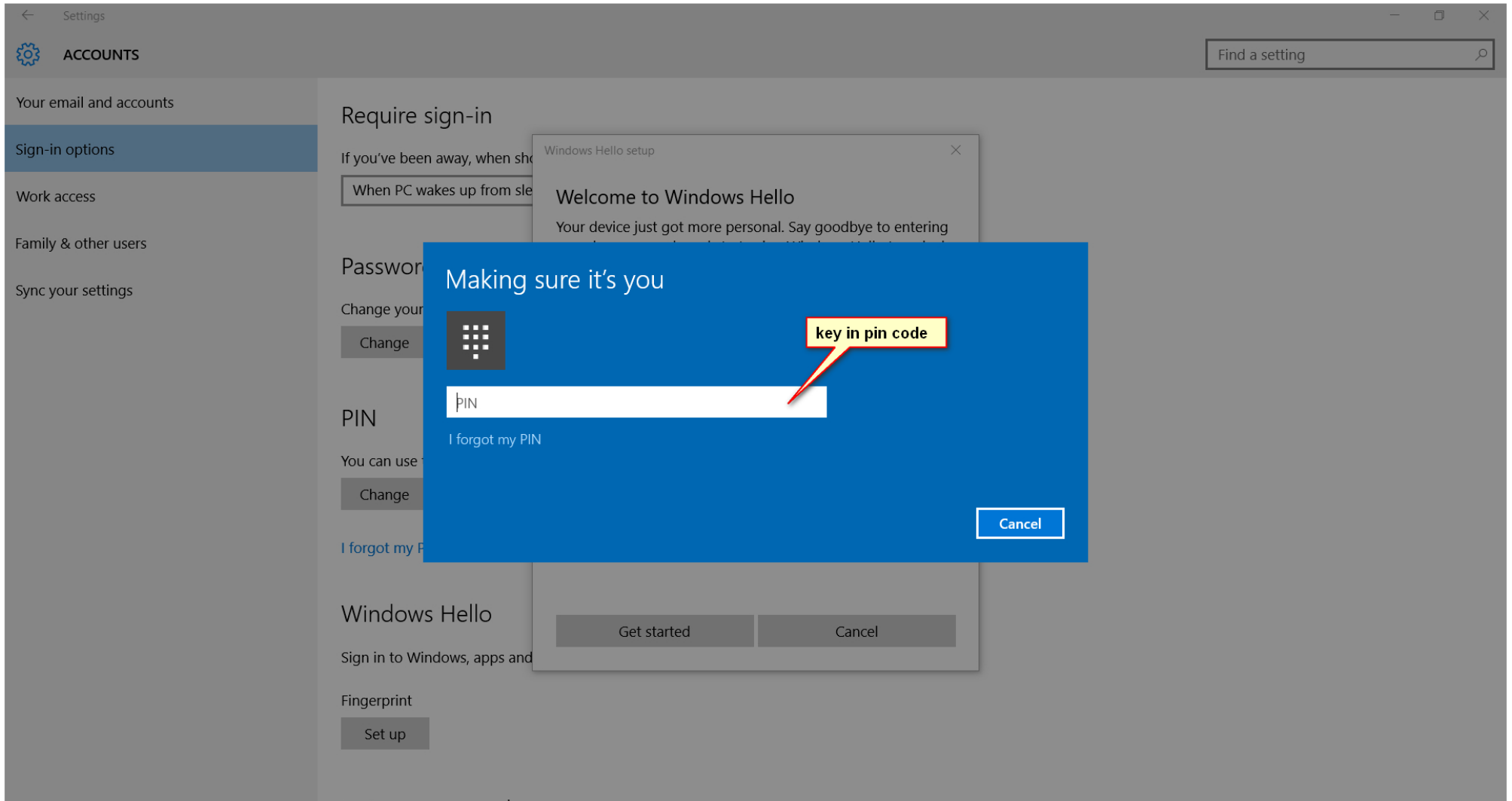
Your device just got more personal. Say goodbye to entering complex passwords and start using Windows Hello to unlock your device, verify your identity, and buy things in the Store using your fingerprint.

[Learn more](#)

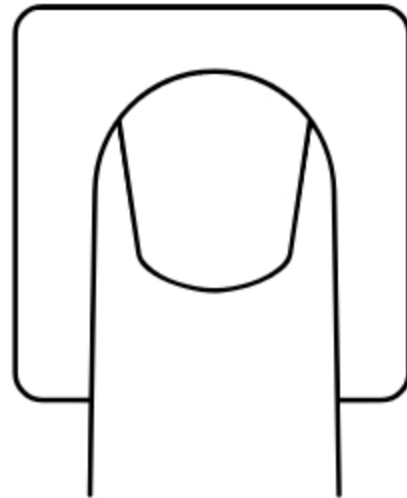
**setup windows
hello**

Get started

Cancel



Windows Hello setup



Touch the fingerprint sensor

Repeatedly lift and rest your finger on the sensor until setup is complete.

Cancel

Windows Hello setup



That fingerprint has already been set up on this account. Try a different finger.

Cancel

Now try another angle

Rest and lift your finger at different angles to capture the edges of your print.

Next

Cancel

Windows Hello setup



Keep resting and lifting your finger

Cancel

Windows Hello setup



All set!

Use your fingerprint the next time you want to unlock your device.

[Add another finger](#)

Close

