

Smart ID User Manual

Thank you for using the Smart ID product. This user manual will guide you to adventure the wonderful features of the product.

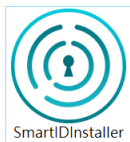
1. How to install Smart ID software

Insert the Smart ID dongle.

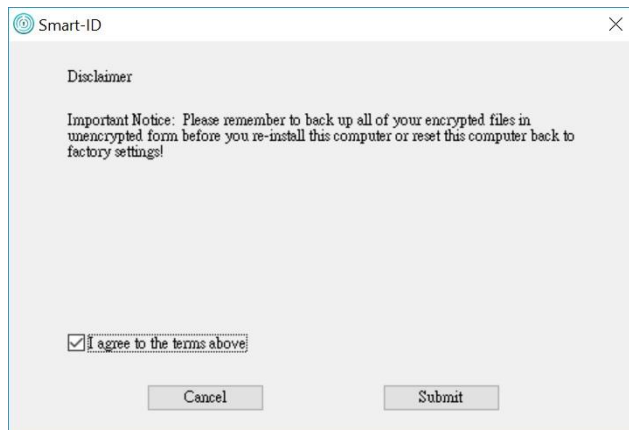
Get the SmartIDInstaller software from the below link.

<http://secureye.com/wp-content/uploads/2019/02/SECUREYE-FINGERPRINT-READER.zip>

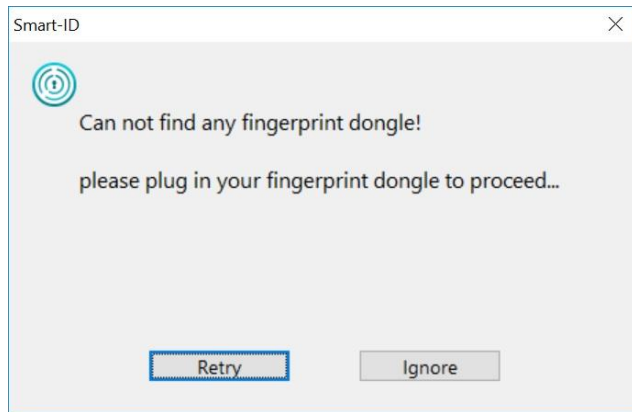
Double click the execution file.



Follow the process of the installation step by step.



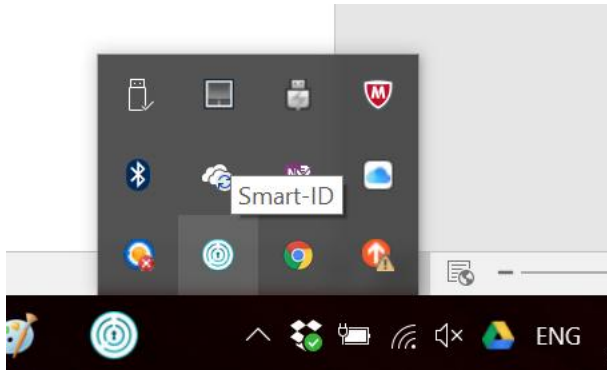
If you did not plug in the dongle, the following message will pop up. However, you can choose "Ignore" to proceed.



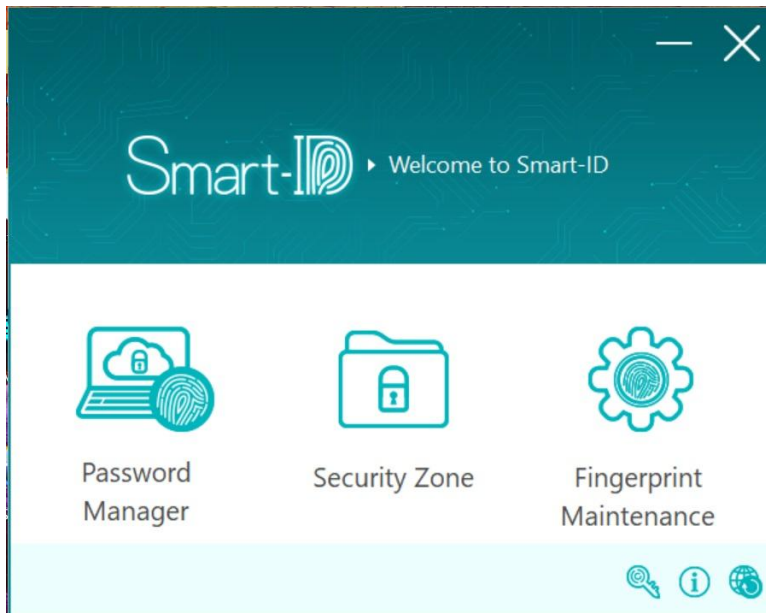
After installation, the Smart-ID program will be launched. Also, you can find the program link on desktop.



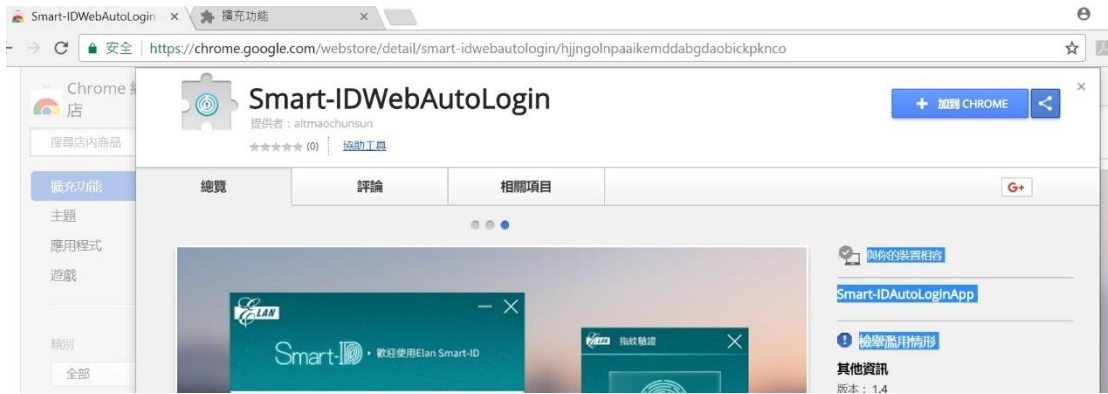
You can also find the program in the shortcut area after the program executed.



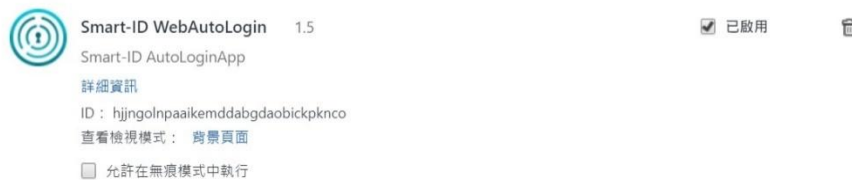
Main panel of the program.



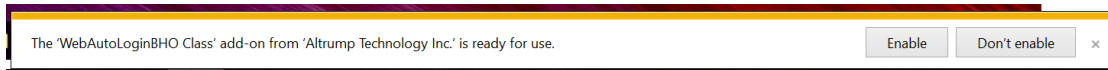
If you have Chrome installed, the following Smart-IDWebAutoLogin program should be install.



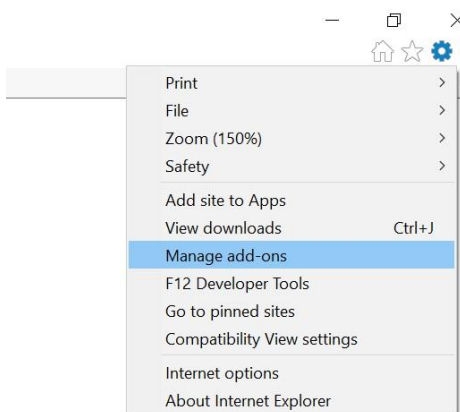
Please install and enable the addon program.



Attention: when the IE browser launched first time after installation, the following message will pop up. Please choose “enable”.



Or, you can check the “Manage add-ons” by clicking the setting icon of IE.



Please make sure the WebAutoLoginBHO program has been activated.

Manage Add-ons ✕

View and manage your Internet Explorer add-ons

Add-on Types	Name	Publisher	Status	Architecture	Load time	Navigation ...
Toolbars and Extensions Search Providers Accelerators Tracking Protection	(Not verified) iTools.hk					
	BHOImpl Class	(Not verified) iTools.hk	Disabled	32-bit and ...	(0.01 s)	
	Altrump Technology Inc.					
	WebAutoLoginBHO Class	Altrump Technology Inc.	Enabled	32-bit	0.02 s	0.22 s
	EVERNOTE CORPORATION					
	Evernote extension	EVERNOTE CORPORATION	Disabled	32-bit and ...		
	Google Inc					
	Google Toolbar	Google Inc	Enabled	32-bit and ...	0.01 s	0.00 s
	Gooble Toolbar Helper	Gooble Inc	Enabled	32-bit and ...	0.00 s	
	WebAutoLoginBHO Class Altrump Technology Inc.					

Show:
 Currently loaded add-ons

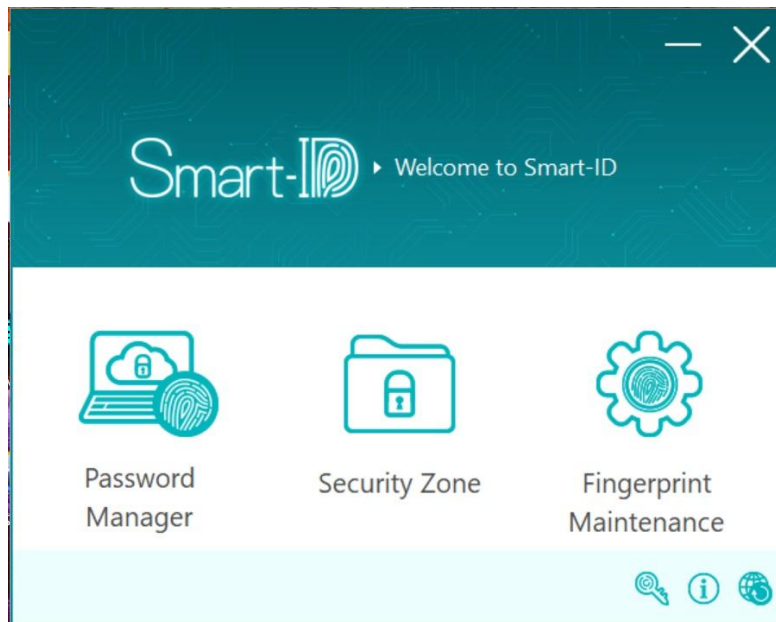
Version: 1.0.0.47 Type: Browser Helper Object
 File date: Wednesday, August 9, 2017, 10:23 AM Search for this add-on via default search provider
[More information](#)

[Find more toolbars and extensions...](#)

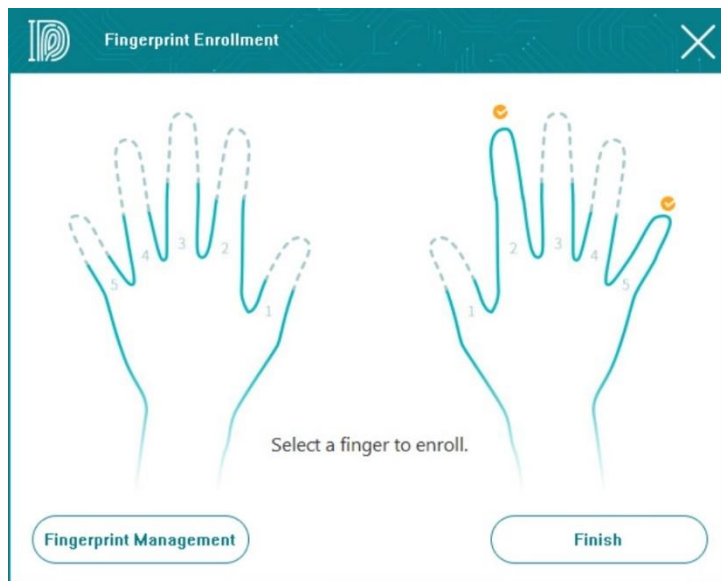
[Learn more about toolbars and extensions](#)

2. How to enroll your fingerprint

Click the “Fingerprint Maintenance” function on the main panel.

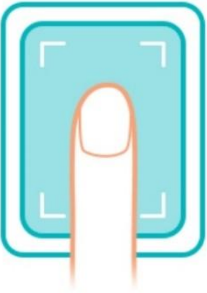


Choose which finger you will enroll. For example, the middle finger.



Follow the instruction on the screen.


ID Fingerprint Enrollment ✕



Press your finger.

Fingerprint Enrollment
Press your finger on the Smart-ID fingerprint sensor up and down for 18 ~ 20 times by following to the instructions.
You are suggested to change the angle of your finger during the enrollment to finish the fingerprint enrollment successfully.

ID Fingerprint Enrollment ✕

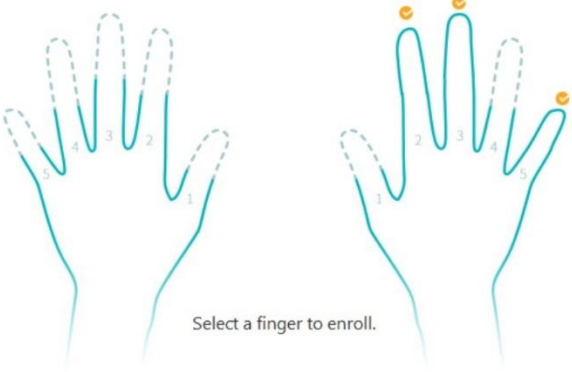


Lift and touch again

Fingerprint Enrollment
Press your finger on the Smart-ID fingerprint sensor up and down for 18 ~ 20 times by following to the instructions.
You are suggested to change the angle of your finger during the enrollment to finish the fingerprint enrollment successfully.

After finishing, the finger you enrolled will be check.

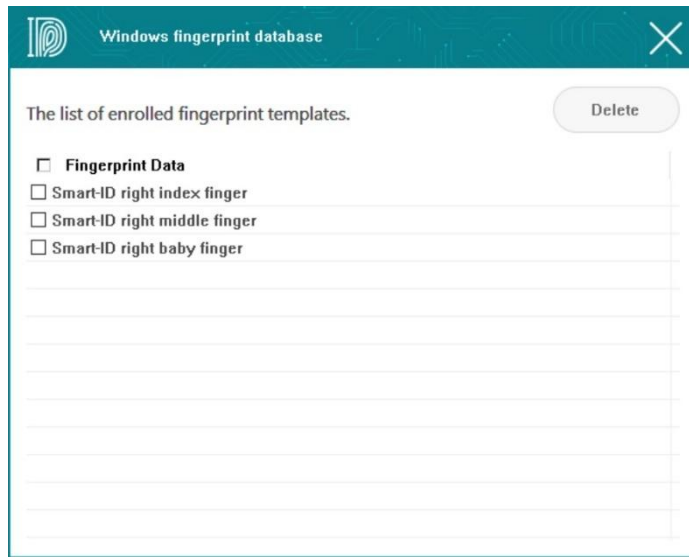
ID Fingerprint Enrollment ✕



Select a finger to enroll.

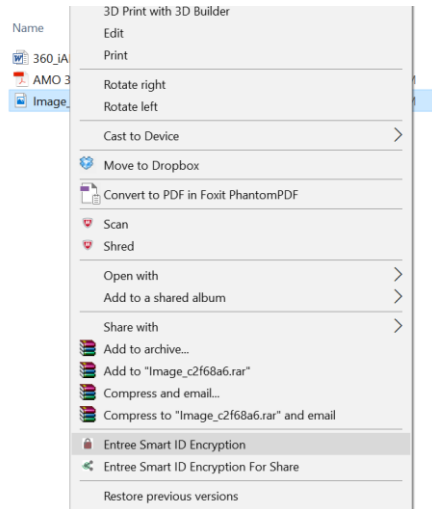
Fingerprint Management Finish

You can check the list of the fingerprint database by clicking the “Fingerprint Management function on the Fingerprint Enrollment window.

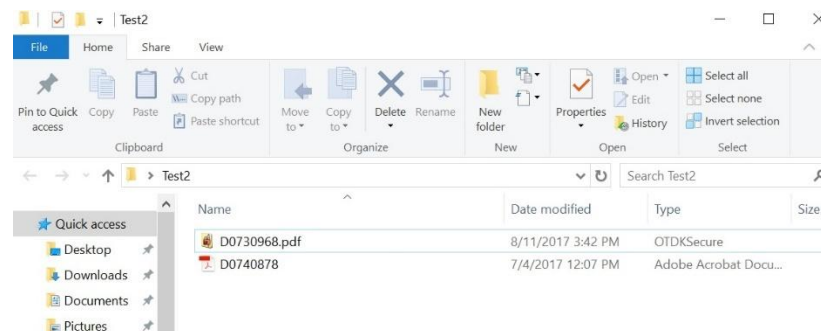


3. File/files encryption/decryption.

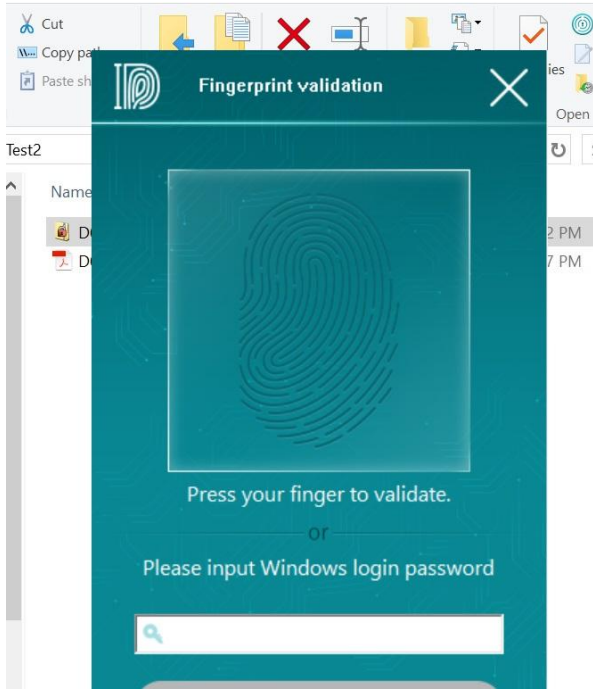
You can select file/files to encrypt. After selecting the file/files, click the right button of the mouse and select the “Smart ID Encryption” feature.



The file/files will be encrypted as the following.

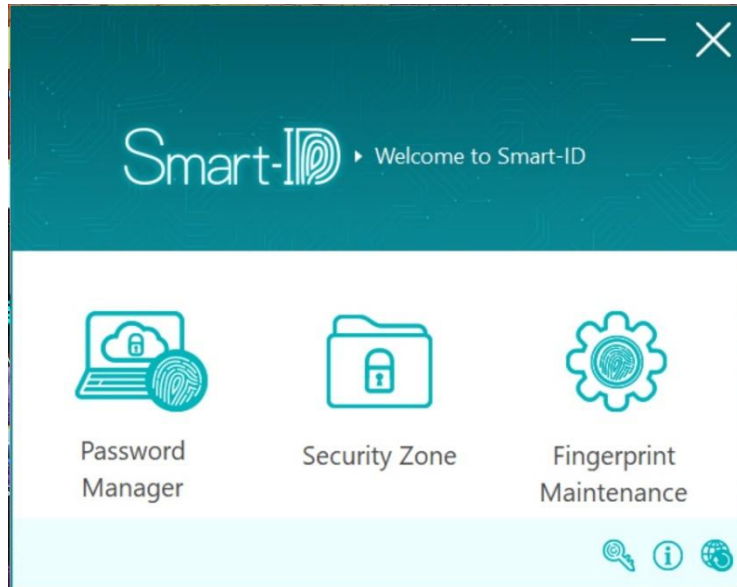


If you want decrypt the encrypted file, just double click it. The fingerprint validation window will pop up. The validation can be done by fingerprint or Windows login password.

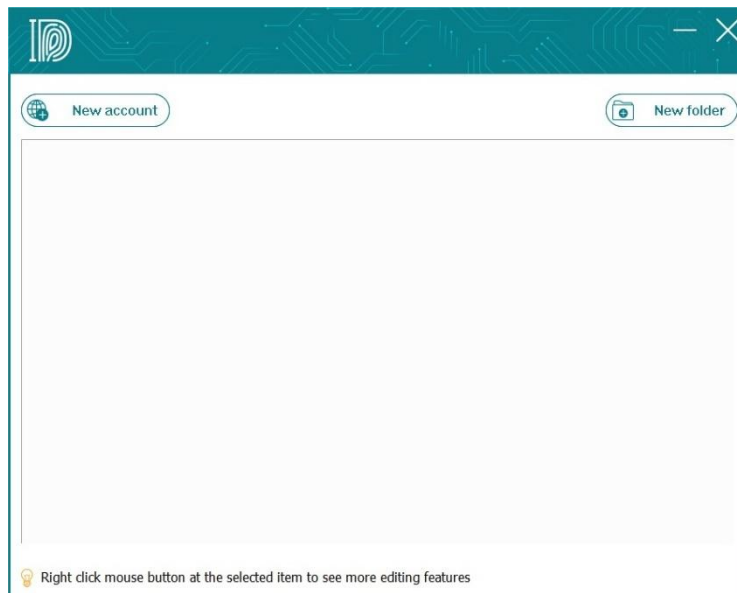


4. Password Manager

Select the “Password Manager” feature on the main panel.



The following the management panel will pop up. You can click the “New account” button to add the web site/social media account.

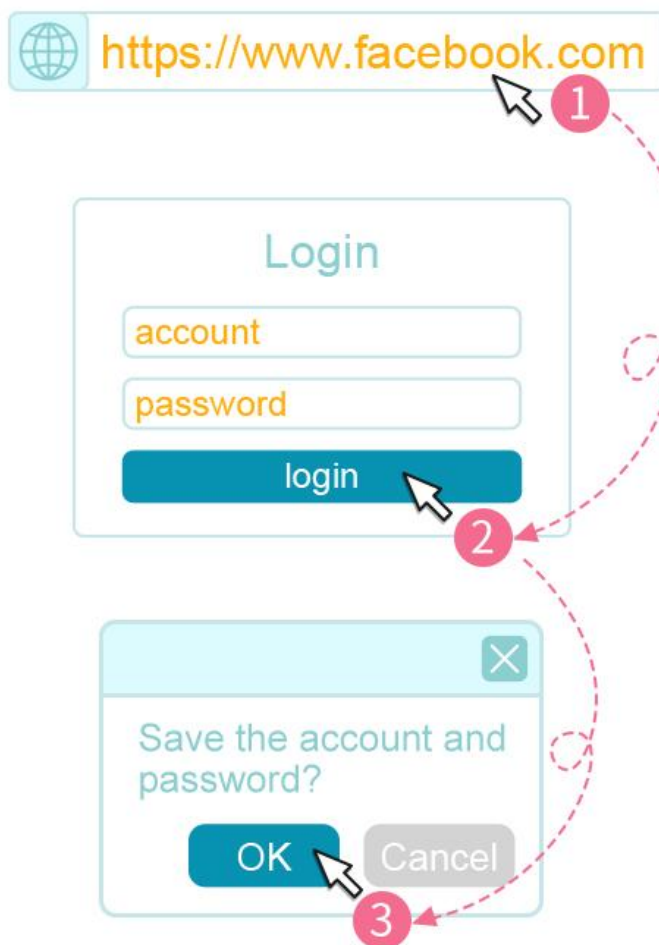


The following IE browser/Chrome will pop up. You can login the web site you would like to add. For example, Facebook. Once you finished the account and password

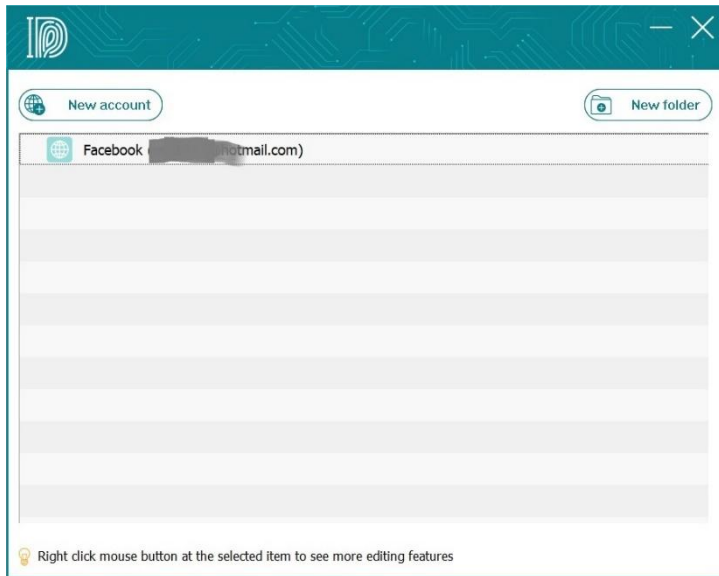
information and click “login” button, a dialog window will pop up.



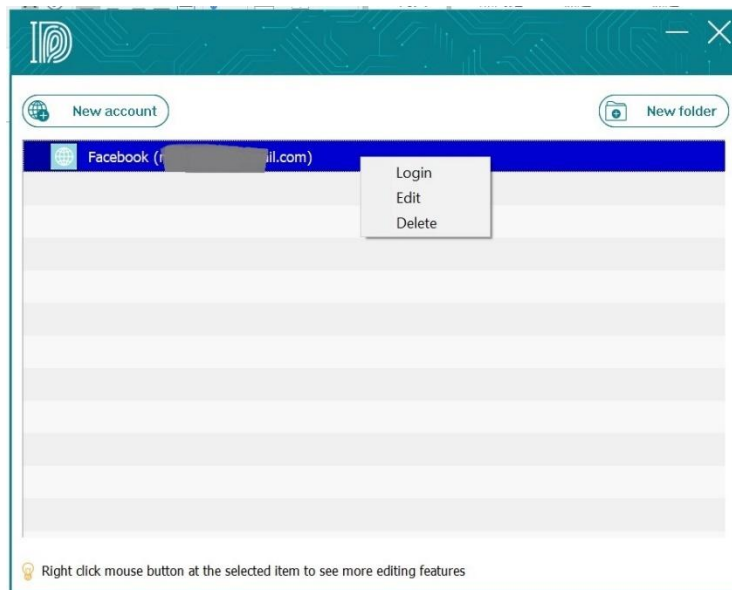
You could add more web accounts by following the below procedure.



Then, you can check the web site management window, the Facebook will be added.



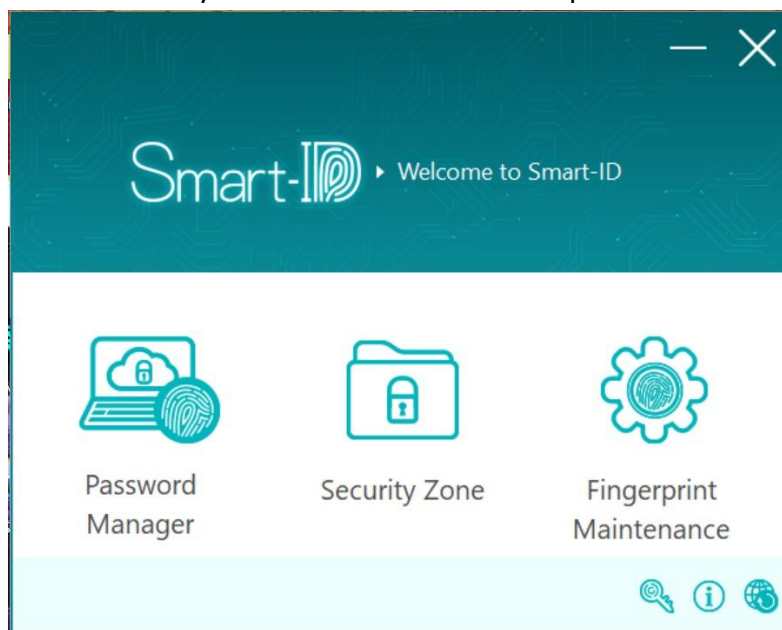
You can do “Login”, “Edit”, or “Delete” by clicking the right button of your mouse on the list.



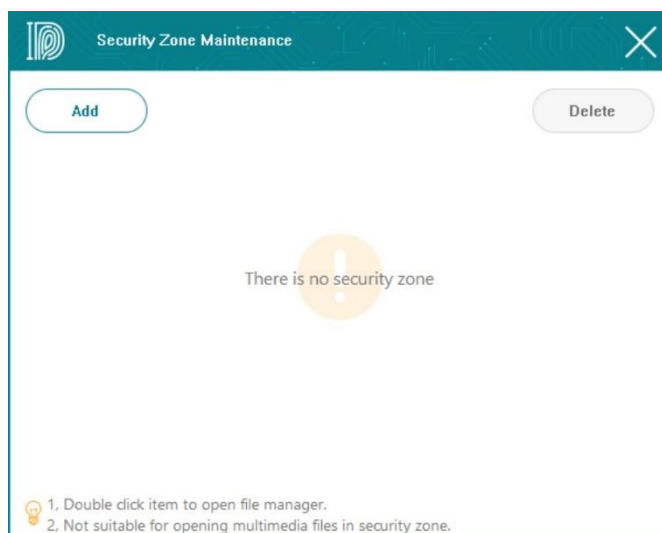
5. Security Zone

You can specify a folder as the security zone. Once a file was copied into the folder or created in the folder, it will be encrypted automatically. You could drag and drop a file/folder into the “Security Zone” icon directly. Even, you can open a file by double clicking the file. After editing and saving the file opened, it will be encrypted automatically.

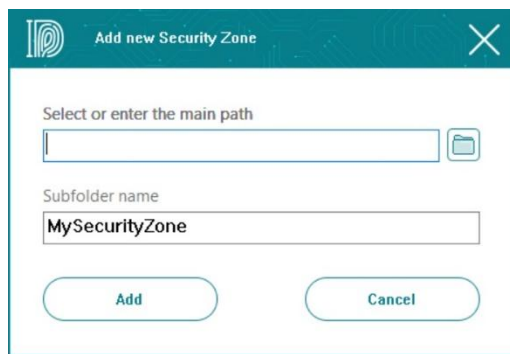
Select “Security Zone” feature on the main panel.



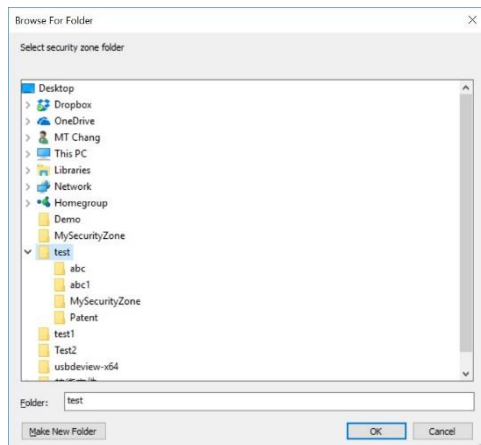
The following folder-specify window will pop up.



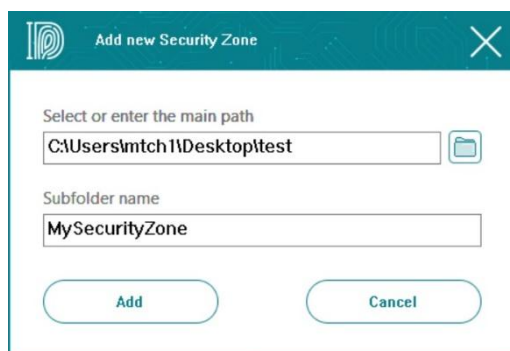
You could click the “Add” icon and the zone specify windows will pop up.



Click the rightmost button in the path specify area. The following path specify window will pop up. Then, you can select the path of the security folder.



Then, specify the Security Zone folder name in the Subfolder name.



You might leave the Subfolder name area empty.

All the files in the security folder will be encrypted automatically.

