

# HALF HEIGHT INDUSTRIAL TURNSTILE



**APPLICATIONS:**

- Suited for applications requiring high volume access and medium levels of security
- Used extensively in applications such as mines, factories, warehouses, universities and stadiums

**DESIGNED FOR**

- Interior and exterior installations
- Severe operating conditions

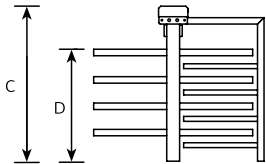
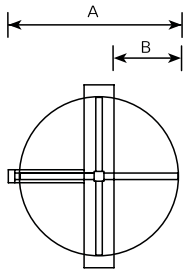
**AVAILABLE CONFIGURATIONS:**

- 3 arm (120°) and 4 arm (90°)
- Single and double

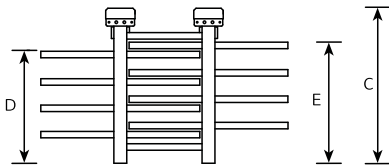
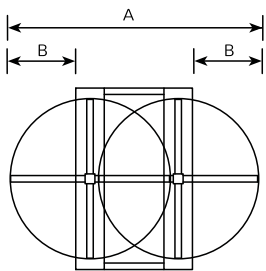
SPECIFICATION		S-HHT1000	
POWER		220 Volt AC (110 Volt AC on request)	
FREQUENCY		50Hz / 60Hz	
POWER CONSUMPTION		50W (single turnstile)   100W (double turnstile)	
SOLENOID VOLTAGE		24 Volt DC (12 Volt DC on request)	
LOGIC VOLTAGE		24 Volt DC	
DIMENSIONS	Single turnstile:	1 335mm wide x 1 400mm long x 1 195mm high	
	Double turnstile:	1 950mm wide x 1 400mm long x 1 195mm high	
ROTOR DIAMETER		1 200mm	
ROTOR ARM CONFIGURATION		3 arm (120°)	4 arm (90°)
ROTOR ARMS		50mm diameter tube arms	
WEIGHT	Single turnstile (4 arm)		130kg
	Double turnstile (4 arm)		210kg
DESIGN		Modular bolt-together design for ease of transport and installation. Components can pas through a standard door. Can be packed in broken-down form either onto a pallet or into a crate for transport	
SYSTEMS INTEGRATION		<ul style="list-style-type: none"> <li>• Integrates with all access control and time &amp; attendance systems</li> <li>• Unlocking for entry / exit rotation controlled through normally open dry contact</li> <li>• Transaction / rotation complete output</li> <li>• Integral wireways with draw wires in place - no exposed wires</li> </ul>	
ROTATION OPTIONS		<ul style="list-style-type: none"> <li>• Electrically controlled bi-directional rotation (factory standard)</li> <li>• Mechanically controlled uni-directional rotation by means of key override</li> <li>• Free rotation</li> </ul>	
LOCKING OPTIONS		<ul style="list-style-type: none"> <li>• Fail-secure auto-lock on power failure (factory standard)</li> <li>• Fail-safe auto-unlock on power failure (Geran standard)</li> <li>• Each direction of rotation configurable for either fail-secure or fail-safe operation</li> </ul>	



## SINGLE RANGE



## DOUBLE RANGE



### Note:

The turnstile screen shown below is an optional extra.  
 Due to our policy of continuous improvement, products are subject to change without notice.  
 Custom designs available on request



### FIRE ALARM OPTIONS

Free rotation when triggered indefinitely (logic programmed for direction or rotation on request)

### POWER OPTIONS

Battery backup with two 12 volt 7Ah batteries connected in series

- Up to 1 000 transactions in fail-safe mode
- Up to 60 minutes operation in fail-safe mode

### ACCESSORY OPTIONS

- Turnstile screen (in matching finish)
- Card / proximity reader mounting bracket
- Biometric / fingerprint reader mounting brackets
- Single / double pushbutton in plastic housing
- LED red cross and green arrow indicator light
- Multiple coin acceptor for pay-per-entry systems
- LCD transaction counter with reset key switch
- Random search device

### FINISH OPTIONS

- Mild steel with UV resistant polyester exterior powder coat finish (charcoal blue hammertone)
- Mild steel with hot dip galvanised finish
- Mild steel hot dip galvanised with UV resistant polyester exterior powder coat finish (charcoal blue hammertone)
- 304 grade brushed stainless steel
- 316 grade brushed stainless steel

Suitable for corrosive environments (details available on request) other colours available on request.